

Kapitel 2
Technische daten

Chapter 2
Technical data

Kapitel 2
Tekniska data

2.1 Rumpf

Ltot :	8,20 m
Loa :	7,83 m
Lvl :	6,75 m
B max	2,70 m
Dj	0,95 m
Sfh	4,90 m
Th	2,30 m
Depc.	2850 Kg

2.1 Hull

Ltot :	8,20 m
Loa :	7,83 m
Lvl :	6,75 m
B max	2,70 m
Dj	0,95 m
Sfh	4,90 m
Th	2,30 m
Depc.	2850 Kg

2.1 Skrov

Ltot :	8,20 m
Loa :	7,83 m
Lvl :	6,75 m
B max	2,70 m
Dj	0,95 m
Sfh	4,90 m
Th	2,30 m
Depc.	2850 Kg

Höchstanzahl Personen
an Bord

8 Pers.

Max number of people
onboard

8 Pers.

Max antal personer
ombord

8 Pers.

Höchstlast

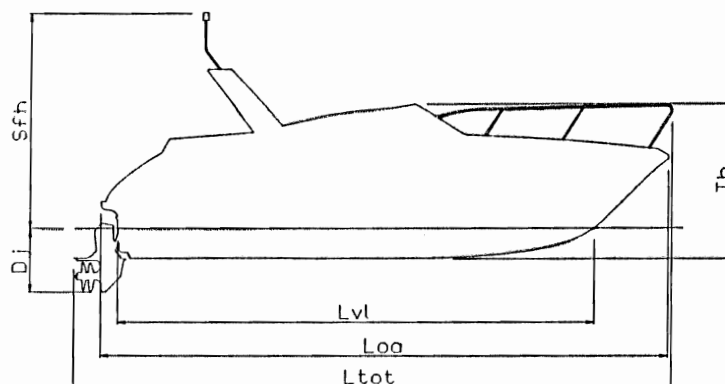
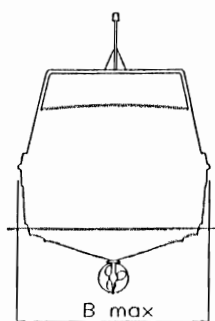
1395 Kg

Max cargo

1395 Kg

Max last

1395 Kg



2.2 Motor

Motorleistung (max.) 202 kW

2.2 Engine

Engine effect (max)

202 kW

2.2 Motor

Motoreffekt (max)

202 kW

Motor Typ/Engine type/Motortyp:

Getriebe Typ/Gear drive type/Backslagstyp:

Propeller/Propeller/Propeller :

Motor Nr./Engine no/Motor nr:

Getriebe Nr./Gear drive no/Backslags nr:

Zündschlüssel Nr./Start key no/Startnyckel nr:

2.3 Tankfassungsvermögen

Kraftstofftank	275 Ltr.
Wassertank	130 Ltr.
Warmwasserbereiter	20 Ltr.
Klärtank	80 Ltr.
Gasol	1 x 2 kg

2.3 Tank Capacities

Fuel tank	275 l
Water tank	130 l
Hot water tank	20 l
Septic tank	80 l
LPG (Low pressure gas)	1 x 2 Kg

2.3 Tankkapacitet

Bränsletank	275 L
Vattentank	130 L
Varmvattenberedare	20 L
Septictank	80 L
Gasol	1 x 2 Kg

Batterie Bank

Start	12 V 70 Ah
Verbrauch	12 V 70 Ah

Batteries

Start	12V 70 Ah
Domestic	12V 70 Ah

Batteribank

Start	12V 70 Ah
Förbrukning	12V 70 Ah

Farbenkode/Colourcodes/Färgkoder

Coat

Rumpf Typ Nr/Hull type no/Skrov typ nr.:

Deck Typ Nr/Deck type no/Däck typ nr.:

Armaturentafel Type Nr/Instrumentpanel type no/Instrumentbord typ nr.:

Tapestrip, Typ Farbe Nr/Tapestripe type colour no/ Tape strip typ nr färg nr.:

Farbe Nr/colour no/färg nr.:

2.5 Schlüssel/Keys/Nycklar

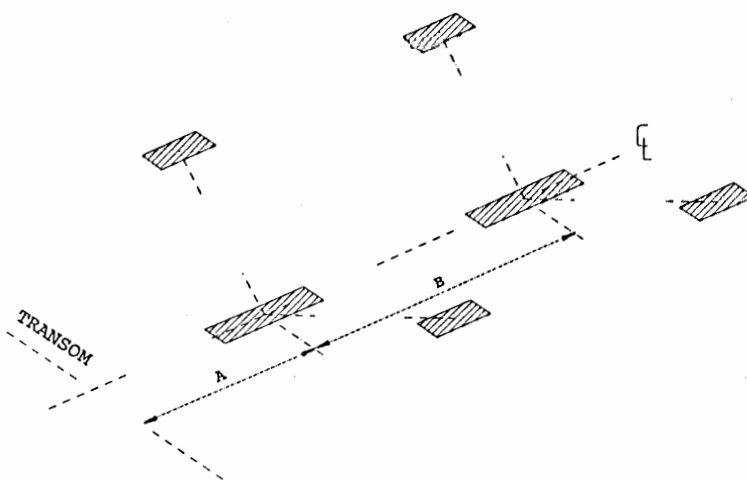
Kabinenschlüssel Nr/Cabindoor key no/Cabin dörrnyckel nr.:

WC, Türschlüssel Nr/Toilet door key no/Toalett dörrnyckel nr.:

Auflagepunkte bei Winterverwahrung

Supportpoints at winter lay-up

Upplagpunkter vid vinterförvaring



A= 1,0 m

B= 2,4 m

Auflage an der Kimm 4 Stk./Support at waterline 4 off/Upplag vid slaget 4 st 50 x 200 mm

Auflage am Kiel 2 Stk./Support at keel 2 off/Upplag kölén 2 st. 100 x 800 mm

3.1 Übersicht

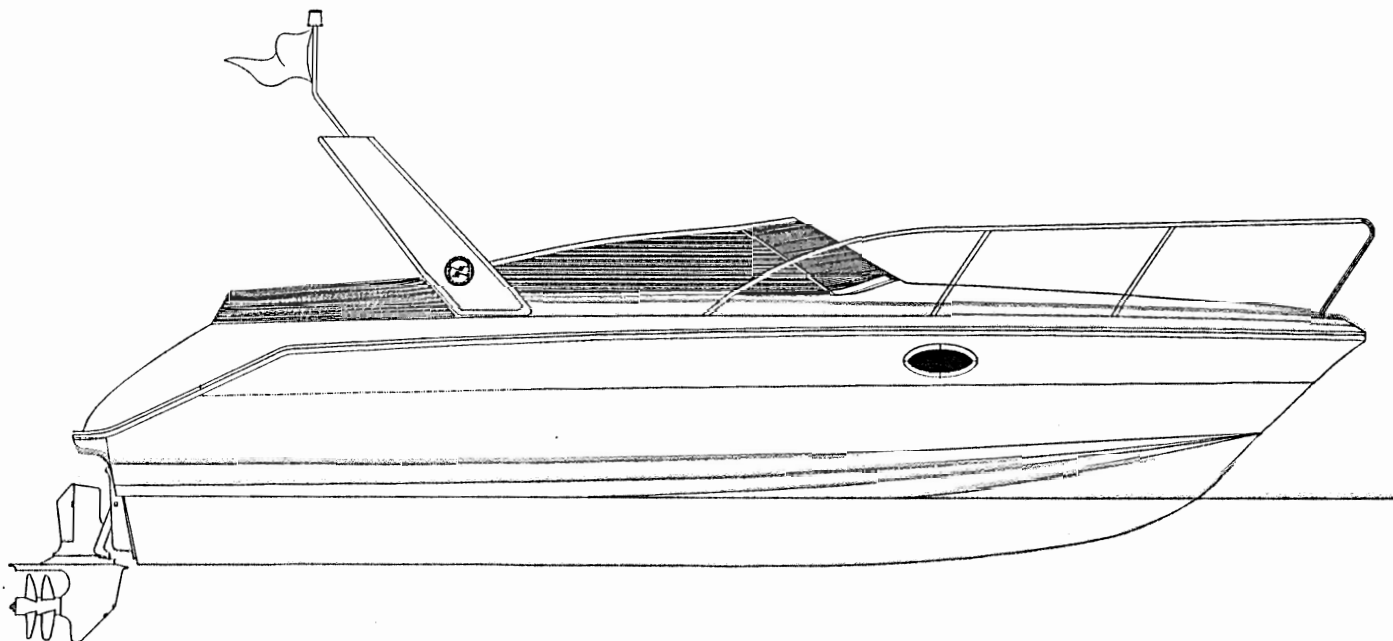
3.1 General view

3.1 Översikt

DECKPLAN

DECK PLAN

DÄCKSPÄN



FLW HW BH

Boat type/No.: DC 26
 Manufacturer: Nimbus Boat, Sweden
 LOA: 7.90 m (25.9 ft.)
 LWL: _____
 Beam: 2.60 m (8.5 ft.)
 Displacement: 2550 kg (5623 lb.)
 (when tested, excl. crew)
 Engine type/Serial No.: AQAD 41
 Drive/Reverse gear: DP
 Ratio: 1.95:1
 Propeller: A8

Testing Conditions

Air temperature: +18 °C 64.4 °FWater temperature: +15 °C 59.0 °FSalt water: ☒ Fresh water: ☐Sea: CalmBarometric pressure: 764 mm Hg
30.1 in. Merc.

Test Results

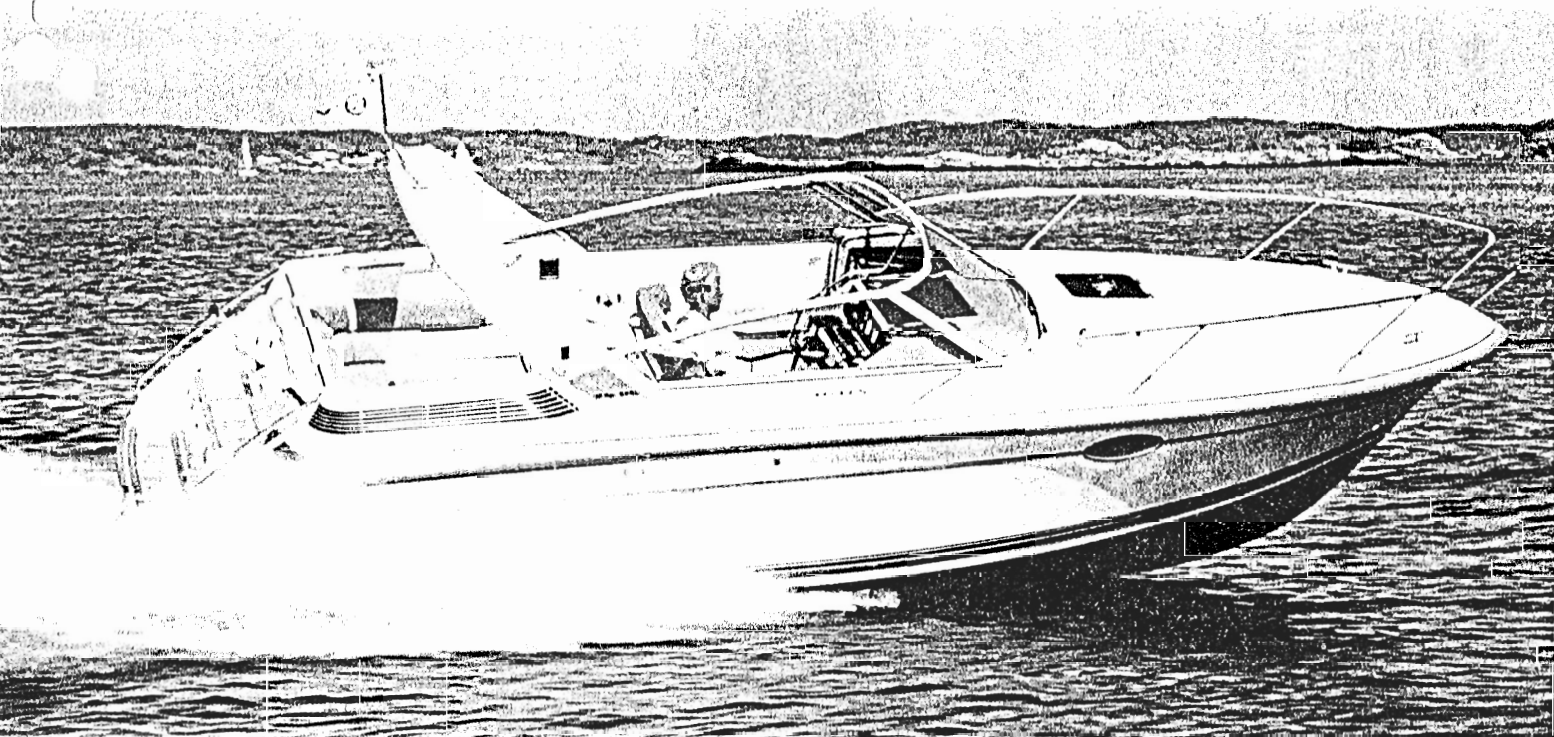
Remarks:

Crankshaft speed r/min	Boat speed		Fuel Consumption			
	Knots	mile/h	L/h	L/naut mile	gal/h	mile/gal*
3850	36.0	41.4	47.0	1.30	12.4	3.3
3700	34.2	39.3	41.4	1.21	11.0	3.6
3500	32.4	37.3	35.4	1.09	9.4	4.0
3250	29.6	34.0	29.5	1.0	7.8	4.4
3000	26.5	30.5	24.7	0.93	6.5	4.7
2750	23.4	26.9	21.1	0.90	5.6	4.8
2500	19.8	22.8	18.1	0.91	4.8	4.8

Speed measured with radar gun.
 Fuel 1/2.
 Water 1/4.
 Trim + 3.
 Crew 2 persons.
 * US gallon
 Test carried out by Volvo Penta/Nimbus.

Acceleration: IDLE 0 – 15 knots 10.6 s
 IDLE 0 – 20 knots 13.0 s
 IDLE 0 – 25 knots 15.6 s

The results refer to the test boat only. Any guarantee is a matter between the boat manufacturer and the customer. Volvo Penta has not carried out any other tests than those reported above.



Test Report



Boat type / No: Nimbus 26 C
Manufacturer: Nimbus Boats AB
LOA: 7.9 m / 25.9 ft
Beam: 2.6 m / 7.5 ft
LWL: —
Beam —
Engine type: 1 x KAD 42
Output: 170 kW / 230 hp
Rpm: 3900
Drive/Reverse gear: DP-D
Ratio: 1.78:1
Deadrise angle at transom: —
Designer: Rolf Eliasson

Test Condition:

Displacement excl. crew: 2925 kg / 6444 lb
Load: Crew: 2, Fuel: 100%, Water: —
Propeller type: B6
Trim angle: + 2
Speed checked by: Radar gun
Air temp: 20 °C / 68 °F
Barometric pressure:
Water temp: 15 °C / 59 °F, Sea: medium
Salt water: ☒
Fresh water: ☐

Remarks:

Acceleration:

Idle—Knots	Sec.
–15	5.9
–20	8.3
–25	10.7
–30	14.0

Test results:

Rpm	Knots	l/h	l/naut mile	mile/h	gal*/h	mile/ gal *	* US gallon
3950	37.1	55.1	1.49	42.7	14.6	2.9	
3750	35.0	45.2	1.29	40.2	12.0	3.4	
3250	29.9	32.2	1.07	34.4	8.5	4.0	
2750	22.9	23.0	1.00	26.3	6.1	4.3	
2500	19.5	20.7	1.06	22.4	5.4	4.1	
2000	11.2	14.6	1.30	12.9	3.9	3.3	

The results refer to the test boat only. Any guarantee is a matter between the boat manufacturer and the customer. Volvo Penta has not carried out any other tests than those reported above.